


特性 Characteristic

- 体积小, 重量轻 Small volume, light weight.
- 高温或低温环境中均能稳定工作
The high temperature or low temperature environment and work stably.

订货标记 Ordering Information

型号命名规则 Model Naming Rules										
DEDT	-DC	12V	D	F	1	-A	X			
										特殊参数: 无: 标准型 Special Parameters: Blank: Standard type
										触点形式: A: 常开型 Contact Form: A: Form A
										触点组数: 1: 1组 Number of Poles: 1: Single pole
										外壳形式: 无: 普通型, F: 外壳带毒背 Cover Type: Blank: Without Bracket type, F: With Bracket type
										线圈功耗: D: 1.44W Coil Power: D: 1.44W
										线圈电压: 5V, 6V, 9V, 12V, 15V, 18V, 24V Coil Voltage: 5V, 6V, 9V, 12V, 15V, 18V, 24V
										线圈性质: DC: 直流 Coil Type: DC: Direct current
										产品型号: DEDT Model: DEDT

线圈参数 Coil Data (at 20°C)

额定电压 Rated Voltage (VDC)	额定电流 Rated Current ±10% (mA)	线圈电阻 Coil Resistance ±10% (Ω)	最大连续外加电压 Max. Continuous Voltage Applied	吸合电压 Pick Up Voltage (Max.)	释放电压 Drop Out Voltage (Min.)	额定功率 Power Consumption At Rated Voltage
5	288.00	17.4	额定电压的150% 150% of rated voltage	额定电压的70% 70% of rated voltage	额定电压的10% 10% of rated voltage	约 Approximately 1.44W
6	240.00	25				
9	160.00	56.3				
12	120.00	100				
15	96.00	156.3				
18	80.00	225				
24	60.00	400				

触点负载 Contact Rating

型号 Model	DEDT
阻性负载 Resistive Load	30A 12VDC
最大切换电流 Max. Switching Current	30A
最大切换电压 Max. Switching Voltage	30VDC
最大切换功率 Max. Switching Power	420W

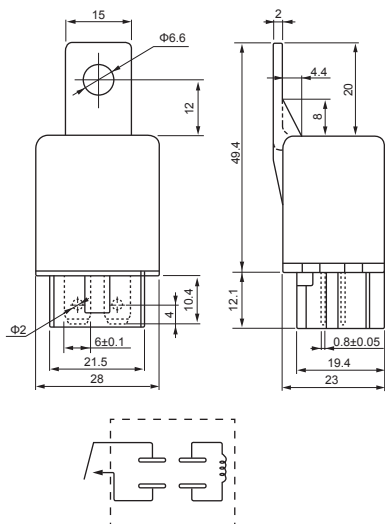
规格说明 Specification

触点材料 Contact Material	银合金 Ag Alloy	
接触电阻 Contact Resistance	50mΩ Max.	
吸合时间 Operate Time	10ms. Max.	
释放时间 Release Time	5ms. Max.	
绝缘电阻 Insulation Resistance	100MΩ Min.(DC500V)	
介质耐压 Dielectric Strength	触点与触点间 Between open contact; AC750V, 50/60Hz 1min.	
	线圈与触点间 Between coil and contact; AC750V, 50/60Hz 1min.	
抗振动 Vibration Resistance	耐久 Endurance	10~55Hz, 双振幅 1.5 mm 10~55Hz, 1.5 mm double amplitude
	误动作 Misoperation	10~55Hz, 双振幅 1.5 mm 10~55Hz, 1.5 mm double amplitude
抗冲击 Shock Resistance	耐久 Endurance	10g Min.
	误动作 Misoperation	100g Min.
寿命 Life	机械寿命 Mechanical Life	10,000,000 operations
	电气寿命 Electrical Life	100,000 operations
环境温度 Ambient Temperature	-40°C~+125°C	
重量 Weight	约 Approx. 32.0g	

外形尺寸、接线、安装孔位图(mm)

Outline Dimensions, Wiring Diagram, Mounting Hole Layout (mm)

靠背型 Bracket type



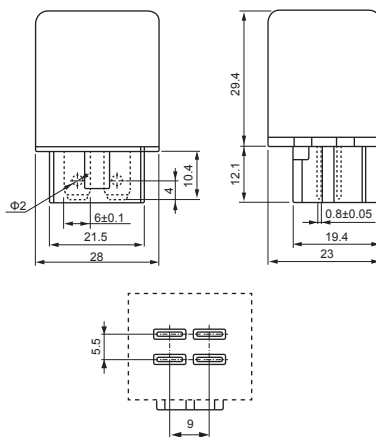
未标注尺寸公差 Dimension tolerance

<1mm: ±0.2mm
1~5mm: ±0.3mm
>5mm: ±0.4mm

注(Note):

安装孔尺寸公差 ±0.1mm
Dimension tolerance of the mounting hole ±0.1mm

普通型 Without bracket type



接线图(底视图) Wiring Diagram (Bottom View)

安装孔位图(底视图) Mounting Hole Layout (Bottom View)

典型用途 Typical Applications

- 摩托车, 电动自行车 Motorcycle, electric bicycle.
- 电动窗 Electric window.
- 用于自动空调机的压缩机上 For the compressor of automatic air conditioner.