


特性 Characteristic

- 80安培触点负载 Contact rating 80A.
- 高瞬间电流(500A) High momentary carry current(500A).
- 快速连接端子 Quick connect terminals.

订货标记 Ordering Information

型号命名规则 Model Naming Rules									
DEDG	-DC	12V	D	F	1	-A	S	X	特殊参数: 无: 标准型 Special Parameters: Blank: Standard type
									安装形式: 无: PCB型 S: 插座型 Mounting Type: Blank: PCB type. S: Socket type
									触点形式: A: 常开型, B: 常闭型, C: 转换型 Contact Form: A: Form A, B: Form B, C: Form C
									触点组数: 1: 1组 Number of Poles: 1: Single pole
									外壳形式: 无: 普通型, F: 塑胶罩背型, S: 铁制罩背型 Cover Type: Blank: Without bracket, F: Plastic bracket type, S: Steel bracket type
									线圈功耗: D: 1.60W/1.80W Coil Power: D: 1.60W/1.80W
									线圈电压: 6V, 12V, 24V Coil Voltage: 6V, 12V, 24V
									线圈性质: DC: 直流 Coil Type: DC: Direct current
									产品型号: DEDG TYPE: DEDG

线圈参数 Coil Data (at 20°C)

额定电压 Rated Voltage (VDC)	额定电流 Rated Current ±10% (mA)	线圈电阻 Coil Resistance ±10% (Ω)	并联电阻 Parallel Resistance (Ω)	等效电阻 Equivalent Resistance (Ω)	吸合电压 Pick Up Voltage (Max.)	释放电压 Drop Out Voltage (Min.)	最大允许电压 Max. Permissible Voltage	线圈功率 Coil Power (W)
6	300.00	20.00	---	---	额定电压的70% 70% of rated voltage	额定电压的10% 10% of rated voltage	额定电压的150% 150% of rated voltage	约 Approximately 1.8W
12	133.33	90.00	---	---				约 Approximately 1.6W
24	66.67	360.00	---	---				

触点负载 Contact Rating

型号 Model	DEDG
阻性负载 Resistive Load	NO/NC: 80A/60A 14VDC
最大切换电流 Max. Switching Current	80A
最大切换电压 Max. Switching Voltage	30VDC
最大切换功率 Max. Switching Power	1,120W

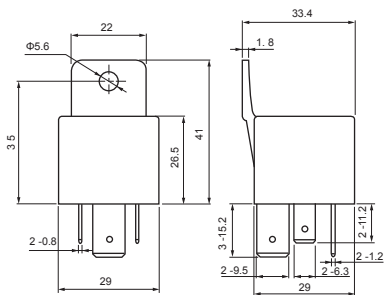
规格说明 Specification

触点材料 Contact Material	银合金 Ag Alloy	
接触电阻 Contact Resistance	50mΩ Max.	
吸合时间 Operate Time	7ms. Max.	
释放时间 Release Time	5ms. Max.	
绝缘电阻 Insulation Resistance	100MΩ Min.(DC500V)	
介质耐压 Dielectric Strength	触点与触点间 Between open contact, AC500V, 50/60Hz 1min.	
	线圈与触点间 Between coil and contact, AC500V, 50/60Hz 1min.	
抗振动 Vibration Resistance	耐久 Endurance	10~55Hz, 双振幅 1.5 mm 10~55Hz, 1.5 mm double amplitude
	误动作 Misoperation	10~55Hz, 双振幅 1.5 mm 10~55Hz, 1.5 mm double amplitude
抗冲击 Shock Resistance	耐久 Endurance	10g Min.
	误动作 Misoperation	100g Min.
寿命 Life	机械寿命 Mechanical Life	10,000,000 operations
	电气寿命 Electrical Life	100,000 operations
环境温度 Ambient Temperature	-40°C~+105°C	
重量 Weight	约 Approx. 48.0g	

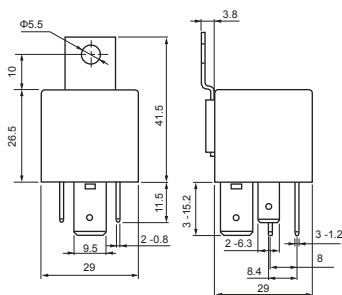
外形尺寸、接线、安装孔位图(mm)

Outline Dimensions, Wiring Diagram, Mounting Hole Layout (mm)

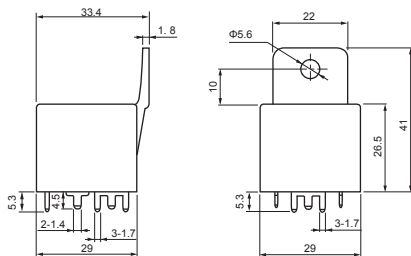
塑胶靠背型 Plactic bracket type



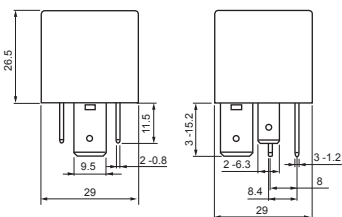
铁制靠背型 Steel bracket type



PCB型 PCB type



普通型 Without bracket type

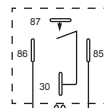
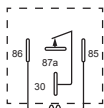
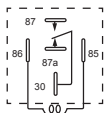


未标注尺寸公差 Dimension tolerance

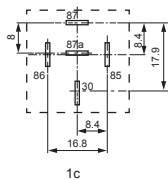
<1mm: ± 0.2 mm
1~5mm: ± 0.3 mm
>5mm: ± 0.4 mm

注(Note):

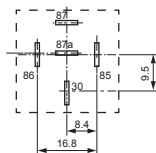
安装孔尺寸公差 ± 0.1 mm
Dimension tolerance of the mounting hole ± 0.1 mm



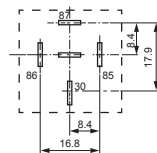
接线图(底视图) Wiring Diagram (Bottom View)



1c



1b



1a

安装孔位图(底视图) Mounting Hole Layout (Bottom View)

典型用途 Typical Applications

- 汽车控制装置等 Automotive control device, etc.